

# SANTA ANITA Pacemaker

Vol. I, No. 3

Santa Anita Assembly Center, California

April 28, 1942.

## POSTAL RULES ISSUED

To facilitate the distribution of mail in the Center, the Post Office today released rules and regulations which will go into effect immediately.

Center residents are requested to include in their return address the following: full name, district, barrack, unit, and avenue, and should be finished with Santa Anita Assembly Center, Arcadia, California.

It is the plan of the Center Post Office to establish one substation in each district for general delivery of mail for residents of that district.

Hours for the Post Office are 9 a.m. to 4:30 p.m. daily except Sunday. The main Post Office south of the Grandstand closes at 12 noon on Saturday.

Incoming mail arrives twice daily, morning mail at 9 a.m. and afternoon mail at 2:30 p.m. Outgoing mail will be dispatched three times daily, 8

(Continued on page 2)

## REGULATIONS ANNOUNCED FOR PACKAGE DELIVERY

Those receiving packages at this Center were requested this morning by Guy E. Wilkinson of the Public Relations office to observe certain requirements closely in order to guarantee safe and rapid delivery of parcels.

In regards to C.O.D. packages by freight or express, Wilkinson requested in an interview with the press that this practice be stopped immediately.

Those expecting packages were asked to instruct their friends and vendors to send all C.O.D. packages by parcel post. Have packages addressed as completely as first-class mail. (See Post office story on page one.) The Post office will then hold packages until called for.

"This regulation is for  
(Continued on page 3)

## REGISTRATION OF MEN 45-64 AT SANTA ANITA TOTALS 760

### NUMBER OF JAPANESE SIGNED FALLS SHORT OF ESTIMATES

A total of 760 persons were registered at the Santa Anita Assembly Center registration headquarters under the Selective Training and Service Act during the three-day period ending last night, it was disclosed today.

## 800 ATTEND SONGFEST

With more than 800 persons attending, the Center's first community sing was held last night in the Recreation hall.

Song leaders for the evening were Frank Ono and Yoshinobu Kojimoto, while the accompanist was Grace Imamoto.

Special numbers included a vocal solo by Dorothy Takii and instrumental selections by Francis Itozoya and Yukio Miyamoto. The program was headed by John T. Saito.

Of the total number, 690 were Japanese residents of this Center while 70 were Caucasian registrants who are members of the administration staff.

The registration of all men between the ages of 45 and 64 at this Center was in conjunction with the nation-wide sign-up of available manpower.

As was to be expected, most of the registrants at Santa Anita were Issei, but all male persons born on or after April 28, 1877, and on or before February 16, 1897, were required to register.

Assisting in the registration was a staff of Center residents headed by James S. Yoshinobu. Interpreters were provided for those unable to understand English.

The number of men between 45 and 64 registered fell short of most estimated figures.

## TWO TWILIGHT TILTS ON TAP

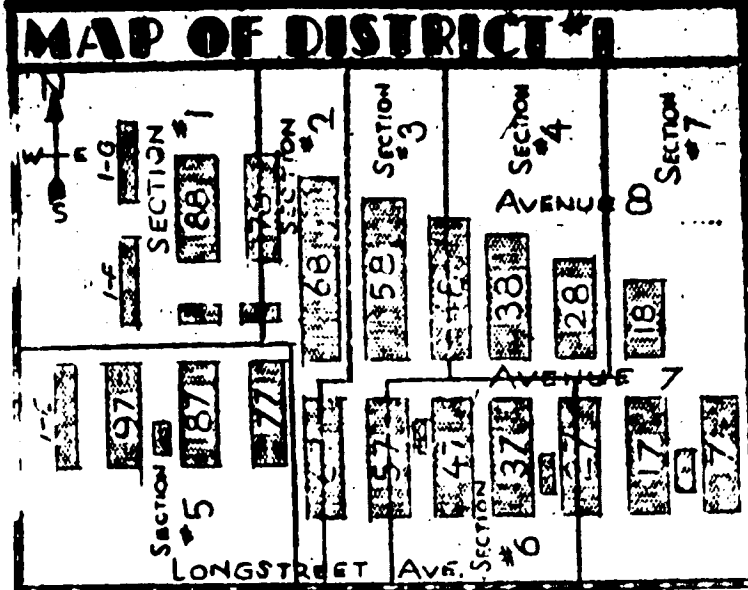
Two games are scheduled for tonight's playing of the elimination tournament to determine the participants in the Twilight Softball League. Third seeded Long Beach tangles with the Vandals, while fourth seeded Chula Vista takes on the Border Cities nine.

The top four teams of the championship division and the two winners in the consolation division will

form the A league, with the remaining teams making up the B league.

Seedings for the tournament were released this morning by the League Committee with the San Diego Falcons getting top seeding. San Pedro was seeded second.

Games scheduled for tonight will be played tomorrow, if the rain which began early this morning continues to game time.



Above is a map of District 1 in the Santa Anita Assembly Center indicating the barracks in the area. According to the present plan, there will be seven districts in the Center. Maps of District 2 to 7 will be published in subsequent issues of the PACEMAKER.

## POST OFFICE RELEASES RULES FOR SANTA ANITA CENTER

Continued from page 1)  
m., 12:30 p.m., and 3 p.m., from the district offices to the main Center Post Office.

Mail is to be distributed by general delivery only. Center residents are required to call for their mail within 10 days since all unclaimed mail after that time are returned to the senders as stipulated by postal regulations.

To avoid errors adults are asked to call for their own mail and discontinue the practice of sending children. Only mail addressed to members of his immediate family will be given to any individual. Failure to conform to this regulation is a federal offense, punishable by fine or imprisonment.

Nameless mail matter will be posted on the bulletin boards.

Since there is no provision for special delivery service in the Center, such mail must be called for at the district offices.

All second class matter such as magazines and newspapers are not forwardable to new address without additional postage. Subscribers should notify their publishers and old Post Offices of their changes of

address.

Change of address forms may be obtained at the district offices.

Forms for aliens to inform Washington of their changes of address may be secured at the same offices.

Persons receiving parcel post matter will be notified and should call for them at the main Center Post Office. All packages and parcels are subject to inspection by postal and police inspectors.

Stamps and postal supplies can be purchased only at the main Center office.

Postage rates are listed in the adjoining column.

## WHAT DISTRICT ARE YOU IN?

District boundaries for purposes of address and self-government, as released today, are:

### DISTRICT I

Barracks 1-E, 1-F, 1-G, 7, 17, 27, 37, 47, 57, 67, 77, 87, 97, 18, 28, 38, 48, 58, 68, 78, and 88.

### DISTRICT II

Barracks 1-C, 1-D, 4, 14, 24, 44, 5, 15, 25, 35, 45, 6, 16, 26, 36, 46, 56, 66, 76, 86, and 96.

### DISTRICT III

Barracks 1-A, 1-B, 1, 11, 21, 2, 12, 22, 32, 42, 52, 62, 3, 13, 23, 33, 43, 54, and 64.

## POSTAGE RATES

For the benefit of Center residents, the Post Office today released a list of rates for ordinary and special mail.

Postage rates are as follows:

Mail within the Center--1 cent per ounce.

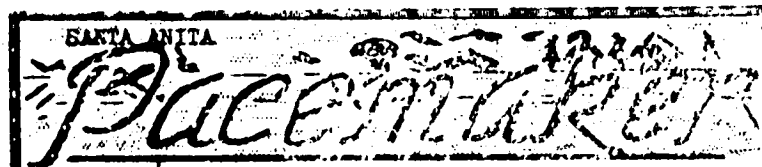
Mail for delivery within postal limits of Arcadia--2 cents per ounce.

Domestic first class mail outside postal limits of Arcadia--3 cents per ounce.

Domestic air mail--6 cents per ounce.

Trans-Pacific air mail to Hawaii--20 cents per ounce, except for military personnel in which case the rate is 6 cents per ounce.

Special delivery on first class matter up to 2 pounds--10 cents in addition to domestic postage required.



### EDITORIAL STAFF

|                                |  |
|--------------------------------|--|
| Editor.....Eddie Shitano       | Recreation Editor.....Yoshinobu Kojimoto |
| Managing Editor.....Kaz Oshiki | Assistant Recreation Ed...Tom Taylor     |
| News Editor....Paul Yokota     | Women's Editor.....Tawoko Katayama       |
| City Editor...S. Shimabukuro   | Art Editor....Roy Kawamoto               |
| Civic Editor...N. Nakamura     | Circulation Manager.....James T. Eno     |
| Issei Editor...M. Kuzumasa     |  |

The foregoing six editors form the Editorial Board.  
Editorial office: Barrack 36, Unit 5.

## NEW MESS HALL OPEN THIS WEEK

The Green Mess No. 4 was opened today to accommodate the new arrivals. Chauncey E. Brewster, director of the Mess and Lodging division also announced that the Orange Mess No. 5 would be opened Thursday for the other evacuees expected this week.

"There is plenty of food for everybody," Brewster said. "I don't want anybody to go hungry. They can come any number of times, but they should go to the end of the line to give everybody a chance."

Thirty hot milk stations will be in operation soon for all babies and special diets for babies will be prepared in the stations hereafter instead of the mess halls.

Brewster also said that as soon as possible special diet serving tables will be opened for small children and also for older Japanese who do not like American cooking and prefer Japanese type of meals.

Kitchen help working in either the Green or Orange mess were asked to use the new gate.

Any adult requiring milk should obtain a special prescription from Dr. Norman Kobayashi and present it to the waiter at each meal.

## 5000 ENJOY FIRST MOVIE

Father Caffrey and Father Avery of Maryknoll Mission at Los Angeles, voluntarily arranged the two and a half hour movie show at Santa Anita on Friday evening, according to E. J. "Spike" England, head of the Recreation department.

The screen was in front of the grandstand, which is estimated to have held more than 5000 people. Cameraman Father Clement Boesflug, Maryknoll Mission.

In addition to the "Gang's All Here" with Frankie Darro, are short subjects, "Sport Parade" and "A Thrill a Second." The youngsters enjoyed three cartoons about Oswald Rabbit, "House of Magic", and "Wildwest Daze."

## 'SPIRITUAL BREAD' SOUGHT

"Seeking spiritual bread," in the words of Rev. Sakae, expressed the desire of worshippers in the six religious meetings held over the weekend in the Recreation hall and Grandstand.

Personal Bible studies were offered by the Seventh Day Adventists. Interested persons may contact Bob Ishikawa, B-47, Unit 19, for

## RULES ISSUED FOR PACKAGES

(Continued from page 1)

the protection of the residents here since the delivery men will not wait at the Baldwin Avenue gate until the receiver is located and pays for his packages."

It was stressed that as far as possible, all packages should be sent parcel post instead of by common carrier as this will guarantee them the full protection of the United States postal service.

"Another problem," added Wilkinson, "is in regard to crates of fruits and other foods being delivered at the Baldwin Avenue gate. Many are sent without proper identification. Fruits in open containers have been sent, and left with only verbal orders as to whom they should go. Obviously, this causes difficulty in tracing ownership."

A few days ago, he reported, six packages were sent here for one person and only one package carried the name. Because of such careless practices, he requested that all packages be properly secured and that name and address be clearly attached to each package.

All packages, except for C.O.D., will be received at the Baldwin Avenue gate from 10 a.m. to 4 p.m. These goods are then taken to the Police station. Unless the packages are securely wrapped and addressed, loss or damage to goods may occur in transit.

These packages will be kept at the Police station and every effort made to notify the receiver as soon as possible. Those having packages awaiting them are

lessons in English. In Japanese, Matsutaro Iwatsubo will be available in B-17, Unit C. Elder Sweeney's sermon, "The Two Advents of Christ," was interpreted to the issei members by Mrs. M. Iwatsubo.

The confessional and mass for the Catholics were conducted by Father Swift. He was assisted by Sisters Martina and Jane from the Maryknoll Mission.

The Holiness Association is expecting their leader, Mr. Okimoto of San Diego next week. Mr. Yoshimoto acted as chairman, while Mr. Kimura gave testimony.

"Religion as a Vital Power" was the sermon by Rev. Ishikawa, formerly of the Friend's church at Norwalk, heard by the Adult Federated Protestants. Rev. Shiraishi acted as chairman.

Dr. E.C. Farnum, executive secretary of the Los Angeles Church Federation, spoke on the "Value of Faith" at the meeting of the Young People's Federated Protestant. "You will have time to rethink the foundation of your faith in Christendom," he said. He cited the Center as a good laboratory in which experiments may be made in the study of sociology or psychology. Dr. Farnum is the chairman of the Home Mission Council.

The Buddhist services featured Rev. Goldwater who gave a commentary on the translation of "The Praises of Endless Love or Boundless Light." Chairman was Roy Kawamoto in the absence of George Kuratomi.

## WANTED: MAY POLE DANCERS

Girls between the ages of 7 and 13 were asked by the Recreation department this morning to volunteer to be in a May Pole dance.

No date has been selected as yet for the dance, but all girls who are interested should sign up at the Recreation office immediately.

required to go to the Police station for inspection and identification of their goods.

# HAWTHORNE WINS 5-3 THRILLER FROM FRISCO NINE



It's a filly in the Winner's circle today. We give verbal tribute to Yasuko Ishida of the mimeographing department for staying around overtime on our last publication day to see that the PACEMAKER came out.

And place money goes to the assembling and stapling crew and the circulation boys who saw to it that our promise to come out every Tuesday and Friday was no idle boast.

## TRACKMEET

We see by the Manzanar Free-Press that the Terminal Island team beat the Lusty Nine in a Junior League ball game by the score of 41 to 2.

The Islanders scored 33 runs in the third inning. If this is Manzanar's idea of a track meet, we hurriedly put in a protest and shall reconsider our challenge to meet them in a telegraphic track meet.

## CYROSURE

Among distinguished visitors to the Santa Anita Assembly Center in the past few days were Col. Karl Bonletsen and Col. Whittaker of Gen. DeWitt's staff, Tom Clarke, Milton Eisenhower, and Rex Nicholson of the C.C.A.A.

Sunday visitors here included Dr. Aurelia Reinhardt, president of Mills College; Miss Blake, president of the Marlborough School, and Miss Sharp, president of the Unionian Committee of Boston, Massachusetts.

Thus are the eyes of the nation on us.

## IN THE DUST

This week's also-ran is the Manzanar Free Press which so far has continued to ignore us to our sorrow.

## WELCOME!

### Editorial

The pioneer residents of Santa Anita Assembly Center, who have made this their home now for almost a month, welcome the new arrivals.

There is much to do here as is natural in any boom town. Those willing to work may find jobs through the Personnel office. Young children are given the opportunities of organized play and study through the Recreation department. For youths, there are sports, dances, and music.

Everyone will find a co-operative, friendly spirit at Santa Anita.

## CANTEEN POSTS HOURS

The canteen, in charge of Lieut. H. A. Todhunter, is open daily from 9:30 a.m. to 6 p.m. with the exception of Sunday, when it is open from 12 noon to 6 p.m.

Though a few medical supplies are available, no special prescription can be filled. Merchandise may be ordered from the Sears Roebuck and Montgomery Ward catalogues.

Since the canteen is operated for the convenience

## CHEFS COOK COMETS 17-14

Pitcher Shiro Morimoto of Hawthorne won his own game yesterday by driving a fly into left field in the extra inning to bring home George Miyake, who was perched on third. Hawthorne won the elimination tourney tilt, 5-3, from San Francisco on the Anita Chiquita field.

In winning the extra inning game Morimoto set down the Frisco team with only one hit. John Yamagata allowed four hits and two earned runs.

Tadao Satow tagged Yamagata for two hits, hitting .500 for the evening.

In the other elimination contest the Chefs outscored the San Diego Comets, 17-14, in a wild slugfest that was marked by 18 errors, the Chefs committing 12 of them.

Chefs' Mabe and Takekita and Comet Sugii commoted for circuit clouts.

Kawagoe hurled and Okada caught for the Chefs, while Obayashi pitched for San Diego with Sugii behind the bat.

## PHOTOGRAPHER TAKES PICTURES AT CENTER

Stanley Troutman, Acme News Pictures photographer, was here Friday afternoon to take pictures of life in general here. Acme News is located in the Los Angeles Daily News building.

"We'll make about 50 prints of the pictures I took today and send them to the various newspapers who subscribe to our services.

More will go to our main offices in Cleveland and New York, from where the smaller newspapers will receive mats. I think about 1000 newspapers will print some of the pictures," stated Troutman, when asked by a PACEMAKER staff writer.

Among the pictures taken by Troutman were those of children playing and sing-

ing, of women doing washing and ironing, and of youth listening to the radio on the lawn.

When shown a copy of the PACEMAKER, Troutman, who has been connected with Acme Pictures for five years, said, "Your paper certainly looks good. I imagine this is just the thing that is needed in a place like this."